

THIS DRAWING IS UNPUBLISHED. RELEASED FOR PUBLICATION  
 © COPYRIGHT - By - ALL RIGHTS RESERVED.

| LOC | DIST | REVISIONS   |                           |         |        |
|-----|------|-------------|---------------------------|---------|--------|
| P   | LTR  | DESCRIPTION | DATE                      | DWN     | APVD   |
| FT  | 0    | D1          | REVISED PER ECO-11-004917 | 11MAR11 | RK HMR |

SPECIFICATIONS:

MATERIALS:

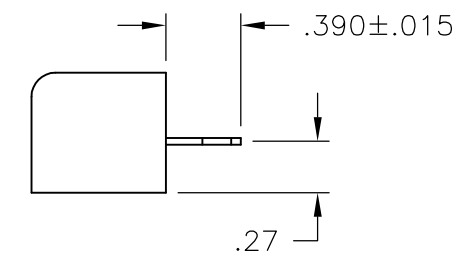
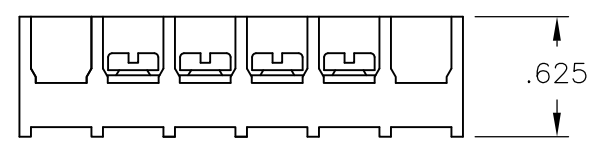
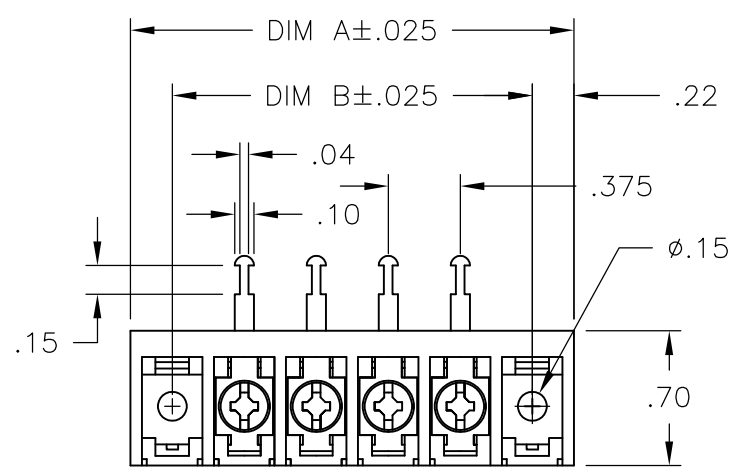
HOUSING: POLYAMIDE, (BLACK) UL94-0  
 TERMINALS: COPPER ALLOY, TIN PLATE  
 SCREWS: ZINC PLATED STEEL WITH CLEAR CHROMATE COATING

ELECTRICAL:

RATING: 25A 300V  
 WIRE RANGE: 12 - 22 AWG

MECHANICAL:

MAXIMUM TORQUE RATING: 7 IN.-LBS.



| 10.875 | 11.311 | 28          | 6STR-28-008       | 2-1546242-8 |
|--------|--------|-------------|-------------------|-------------|
| 10.500 | 10.936 | 27          | 6STR-27-008       | 2-1546242-7 |
| 10.125 | 10.561 | 26          | 6STR-26-008       | 2-1546242-6 |
| 9.750  | 10.186 | 25          | 6STR-25-008       | 2-1546242-5 |
| 9.375  | 9.811  | 24          | 6STR-24-008       | 2-1546242-4 |
| 9.000  | 9.436  | 23          | 6STR-23-008       | 2-1546242-3 |
| 8.625  | 9.061  | 22          | 6STR-22-008       | 2-1546242-2 |
| 8.250  | 8.686  | 21          | 6STR-21-008       | 2-1546242-1 |
| 7.875  | 8.311  | 20          | 6STR-20-008       | 2-1546242-0 |
| 7.500  | 7.936  | 19          | 6STR-19-008       | 1-1546242-9 |
| 7.125  | 7.561  | 18          | 6STR-18-008       | 1-1546242-8 |
| 6.750  | 7.186  | 17          | 6STR-17-008       | 1-1546242-7 |
| 6.375  | 6.811  | 16          | 6STR-16-008       | 1-1546242-6 |
| 6.000  | 6.436  | 15          | 6STR-15-008       | 1-1546242-5 |
| 5.625  | 6.061  | 14          | 6STR-14-008       | 1-1546242-4 |
| 5.250  | 5.686  | 13          | 6STR-13-008       | 1-1546242-3 |
| 4.875  | 5.311  | 12          | 6STR-12-008       | 1-1546242-2 |
| 4.500  | 4.936  | 11          | 6STR-11-008       | 1-1546242-1 |
| 4.125  | 4.561  | 10          | 6STR-10-008       | 1-1546242-0 |
| 3.750  | 4.186  | 9           | 6STR-09-008       | 1546242-9   |
| 3.375  | 3.811  | 8           | 6STR-08-008       | 7-1437654-2 |
| 3.000  | 3.436  | 7           | 6STR-07-008       | 796988-7    |
| 2.625  | 3.061  | 6           | 6STR-06-008       | 1546242-6   |
| 2.250  | 2.686  | 5           | 6STR-05-008       | 9-1546158-4 |
| 1.875  | 2.311  | 4           | 6STR-04-008       | 1546242-4   |
| 1.500  | 1.936  | 3           | 6STR-03-008       | 796988-6    |
| 1.125  | 1.561  | 2           | 6STR-02-008       | 8-1546158-9 |
| DIM B  | DIM A  | NO. OF POS. | BUCHANAN PART NO. | PART NO.    |

|                                                                                    |  |                                 |                 |           |               |               |
|------------------------------------------------------------------------------------|--|---------------------------------|-----------------|-----------|---------------|---------------|
| THIS DRAWING IS A CONTROLLED DOCUMENT.                                             |  | DWN<br>E. ZANOLINI<br>04FEB2002 | TE Connectivity |           |               |               |
| DIMENSIONS: INCHES                                                                 |  | CHK<br>S. YODER<br>04FEB02      |                 |           |               |               |
| TOLERANCES UNLESS OTHERWISE SPECIFIED:                                             |  | APVD<br>S. YODER<br>04FEB02     | NAME            |           |               |               |
| 0 PLC ± -<br>1 PLC ± -<br>2 PLC ± .01<br>3 PLC ± .005<br>4 PLC ± -<br>ANGLES ± 1/2 |  | PRODUCT SPEC                    | 6STR-XX-008     |           |               |               |
| MATERIAL                                                                           |  | APPLICATION SPEC                | SIZE            | CAGE CODE | DRAWING NO    | RESTRICTED TO |
| FINISH                                                                             |  | WEIGHT                          | A3              | 00779     | C-7-1437654-2 | -             |
| CUSTOMER DRAWING                                                                   |  |                                 | SCALE           | SHEET     | REV           |               |
|                                                                                    |  |                                 | NTS             | 1 OF 1    | D1            |               |